



# GAT MONTHLY MEMBERSHIP PROGRESS REPORT

Results as of: 3/31/2022

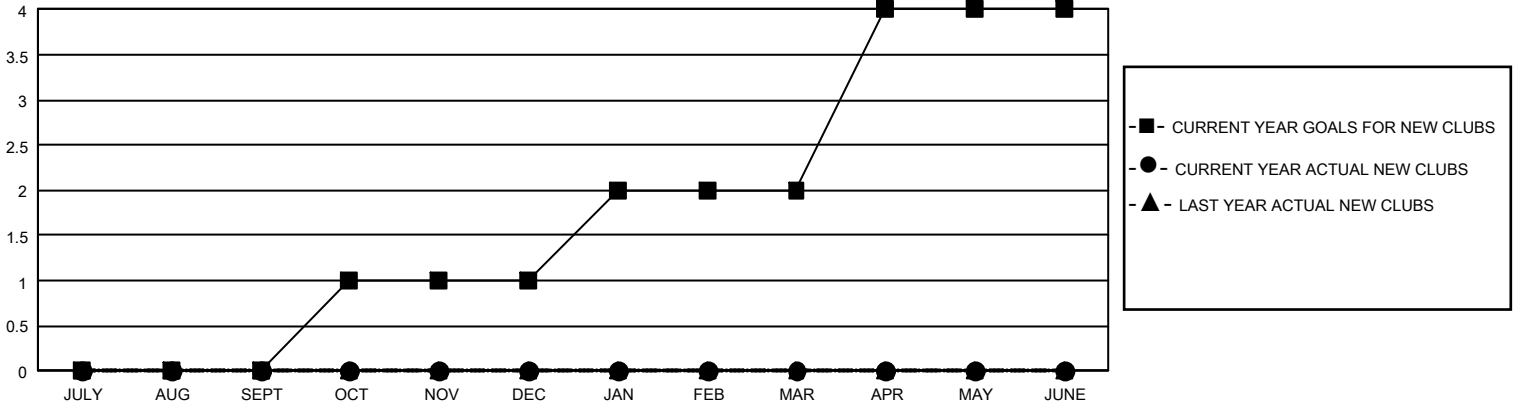
## GMT Constitutional Area 8, Group C

REPORT DOES NOT INCLUDE CLUBS IN UNDISTRICTED AREAS.

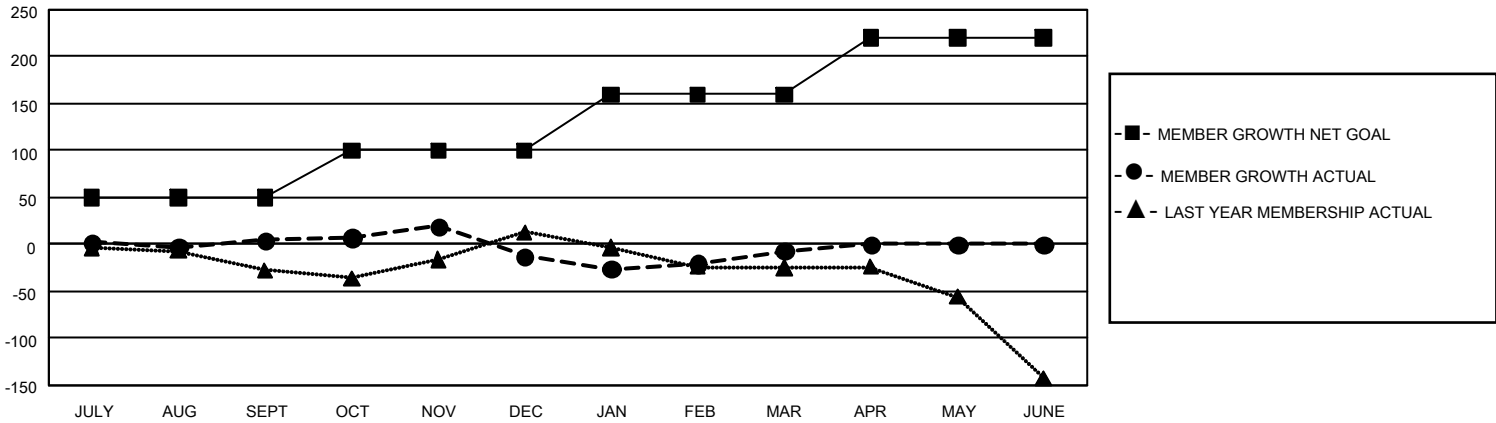
Clubs			
RESULTS FOR 2021-2022			
QUARTER	NEW CLUB GOAL	NEW CLUBS	DROPPED CLUBS
JULY/AUG/SEPT	0	0	4
OCT/NOV/DEC	3	0	0
JAN/FEB/MAR	3	0	0
APR/MAY/JUNE	6	0	0

Members			
RESULTS FOR 2021-2022			
QUARTER	MEMBER GROWTH NET GOAL	MEMBER GROWTH ACTUAL	DROPPED MEMBERS ACTUAL (including transfers)
JULY/AUG/SEPT	50	65	50
OCT/NOV/DEC	50	86	94
JAN/FEB/MAR	60	75	58
APR/MAY/JUNE	60	0	0

GOALS AND ACTUAL NEW CLUBS CUMULATIVE



GOALS AND ACTUAL MEMBERS CUMULATIVE



DROPPED CLUBS: 4	
<b>DROPPED MEMBERS</b>	
DECEASED	19
CLUB CANCELLED	0
OTHER	183
<b>TOTAL</b>	<b>202</b>

71 CLUBS OF 126 ADDED 1 OR MORE NEW MEMBERS

[CLICK HERE FOR CUMULATIVE MEMBERSHIP DATA](#)

GENDER DISTRIBUTION	
MALE	1,036 (53.16%)
FEMALE	913 (46.84%)
NON BINARY	0 (0.00%)
PREFER NOT TO ANSWER	0 (0.00%)
TOTAL FAMILY UNIT MEMBERS	506
FAMILY MEMBERS PAYING HALF DUES	262